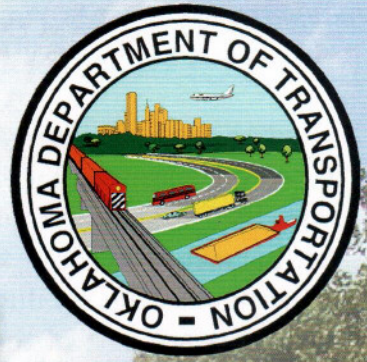


Public Meeting



SEPTEMBER 14TH, 2009
METROTECH TECH. CENTER
CONF. CENTER AUDITORIUM

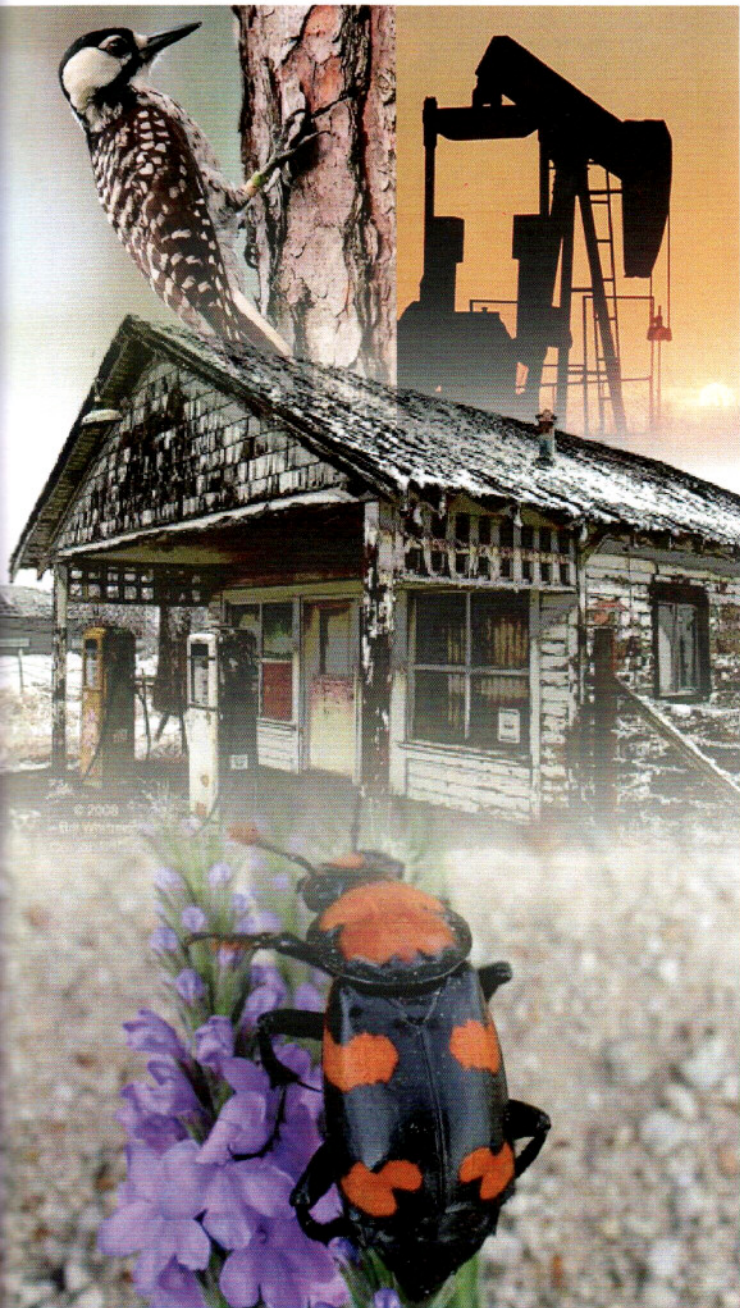
www.okladot.state.ok.us/meetings/other.php

SEPTEMBER 15TH, 2009
DOWNTOWN TULSA LIBRARY
AARONSON AUDITORIUM

High Speed Intercity Passenger Rail

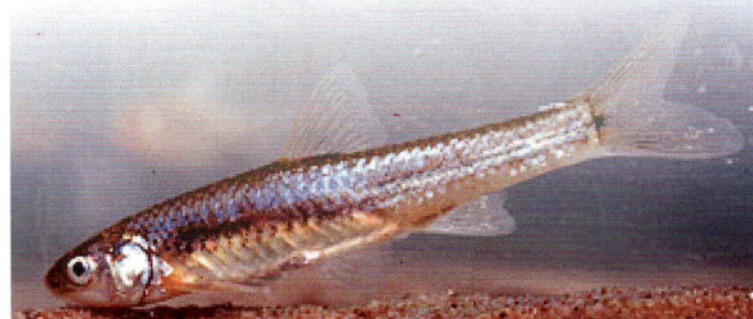
WHAT IS NEPA AND THE ODOT DECISION MAKING PROCESS?

NEPA is an acronym for the federal law called the National Environmental Policy Act, enacted in 1969. In order to use federal funds, a decision-making process that balances the social, economic, and environmental concerns must be conducted. Public Involvement and comments are part of the NEPA process. The Department will solicit comments from State, Federal, Tribal, public, and local agencies, and will continue to coordinate with them as necessary. Data will be collected on potential environmental issues such as noise, wetlands, cultural resources, historic resources, parks, displacements of homes or businesses, etc., to evaluate potential impacts of the proposed improvements. Economic impacts such as construction costs, estimated right-of-way, and utility cost data will also be evaluated. This information is utilized to make sound decisions in transportation improvements.

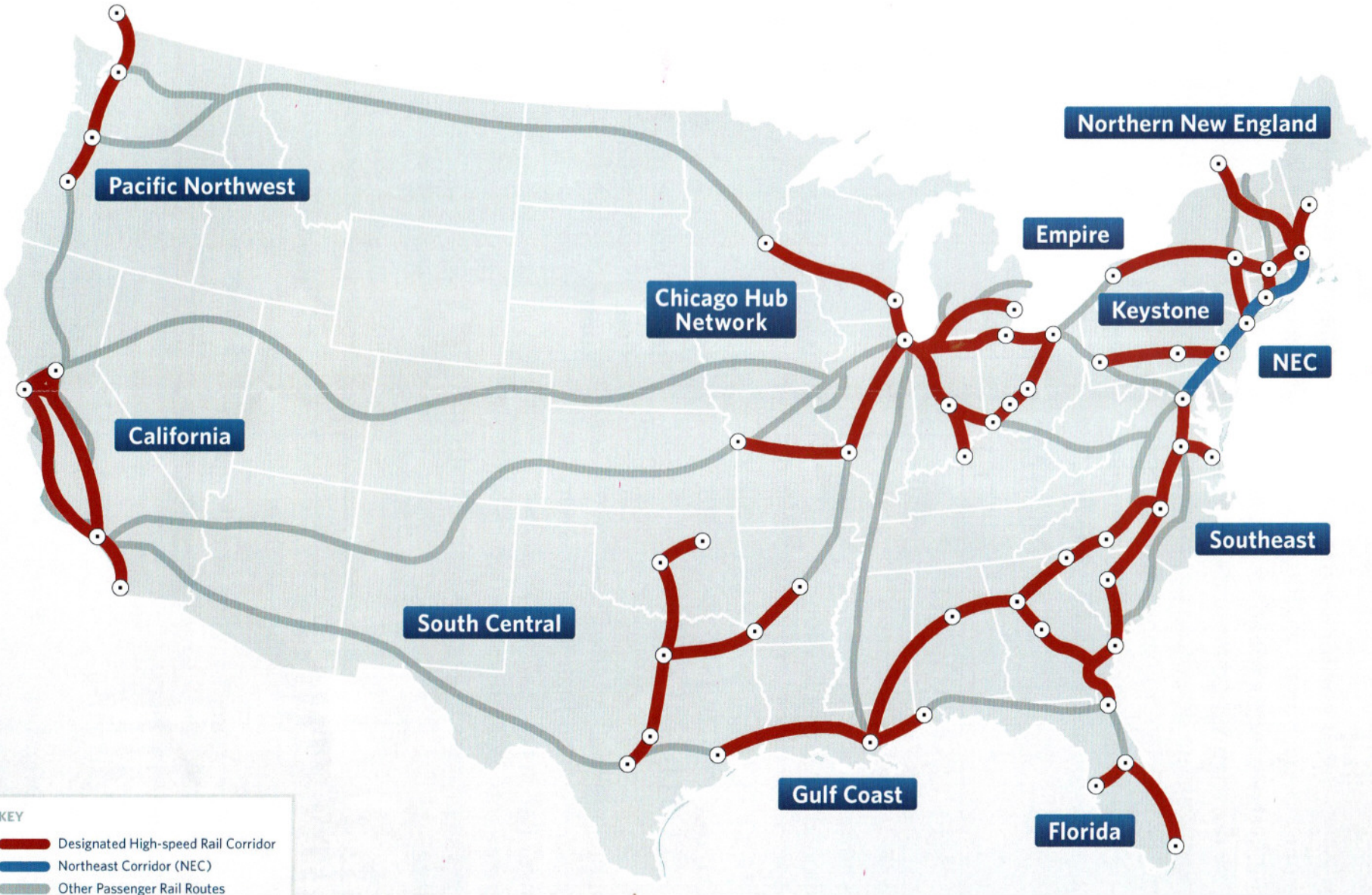


ITEMS CONSIDERED DURING PROJECT DEVELOPMENT

- Purpose and Need for Project
- Alternates
- Affected Environment
- Possible Environmental Consequences:
 - Air Quality Impacts
 - Community Impact Assessment
 - Consideration Relating to Pedestrians and Bicyclists
 - Construction Impacts
 - Cultural Resources and Archeological Sites
 - Economic Impacts
 - Effects on Public Parks, Wildlife and Waterfowl Refuges and Historic Sites
 - Energy
 - Environmental Justice
 - Farmland Impacts
 - Floodplain Issues
 - Hazardous Water / Underground Storage Tanks
 - Irreversible and Irretrievable Commitment of Resources
 - Joint Development
 - Land Use Impacts
 - Noise Impacts
 - Permits
 - Relationship of Local Short-Term Uses vs Long-Term Productivity
 - Relocation Impacts / Right-of-way Acquisition
 - Secondary and Cumulative Impacts
 - Social Impacts
 - Threatened or Endangered Species
 - Visual Impacts
 - Wetland Impacts
 - Wildlife Impacts
- Comments and Coordination / Public Involvement
 - State / Federal Agencies
 - Local / City Officials
 - Tribal Coordination
 - Interested Citizens
- Engineering / Design / Drainage Concerns
- Accidents / Safety Concerns



VISION *for* HIGH-SPEED RAIL *in* AMERICA



WELCOME TO THE HIGH SPEED INTERCITY PASSENGER RAIL PUBLIC MEETING

As part of an initial environmental process, the Oklahoma Department of Transportation has scheduled these Public Meetings to present efforts to secure High Speed Intercity Passenger Rail and some of the opportunities and challenges that lie ahead. Transportation officials will present planned improvements between Tulsa, Oklahoma City and the Texas state line.

WHAT HAPPENS NEXT?

The Department will review and consider comments received from this public meeting. The information and comments received will be incorporated into the project development process. The final environmental document will be prepared and submitted to the Federal Railroad Association for approval. After final approval is received, federal funds may be utilized for design, right-of-way, and construction activities.

A comment sheet is available with this hand-out for your convenience. Please take note of the remittance date and address.

MEETING AGENDA

- 1. Welcome and Introductions
- 2. Presentation
- 3. Question and Answer Session

PRIMARY PURPOSES OF THIS PUBLIC MEETING

Inform the public about the Departments intention to develop High Speed Intercity Passenger Rail in the State of Oklahoma. Take comments from the public which will assist in the process to gain environmental clearance.

MEETING TIMES, DATES, AND LOCATIONS

September 14, 2009 at 6:00 PM

Metro Tech Technology Center, Springlake Campus
Conference Center Auditorium
1900 Springlake Drive
Oklahoma City, OK 73111-5240

September 15, 2009 at 6:00 PM

Downtown Tulsa Library
Aaronson Auditorium
400 Civic Center
Tulsa, OK 74103

QUESTIONS? COMMENTS? ADDRESS UPDATE?

**We must receive your comments no later than
September 25, 2009**

Your input is very valuable to this process and to the Oklahoma Department of Transportation. Please submit your written questions or comments to:

Johnson Bridgwater
Okla. Dept. of Transportation
Rail Programs Division
200 N.E. 21st St.
Oklahoma City, OK 73105
FAX: (405) 522-0890
jbridgwater@odot.org

Be sure to sign in tonight to add your name to the project mailing list, or send your mailing address to Johnson Bridgwater at the address above.

Please visit: www.okladot.state.ok.us/meetings/other.php and www.fra.dot.gov/us/content/31 and www.fra.dot.gov/us/content/647 to get more information and to obtain digital content on this project.